

# Lower Norfork Dam Watershed Project

Baxter County Conservation District



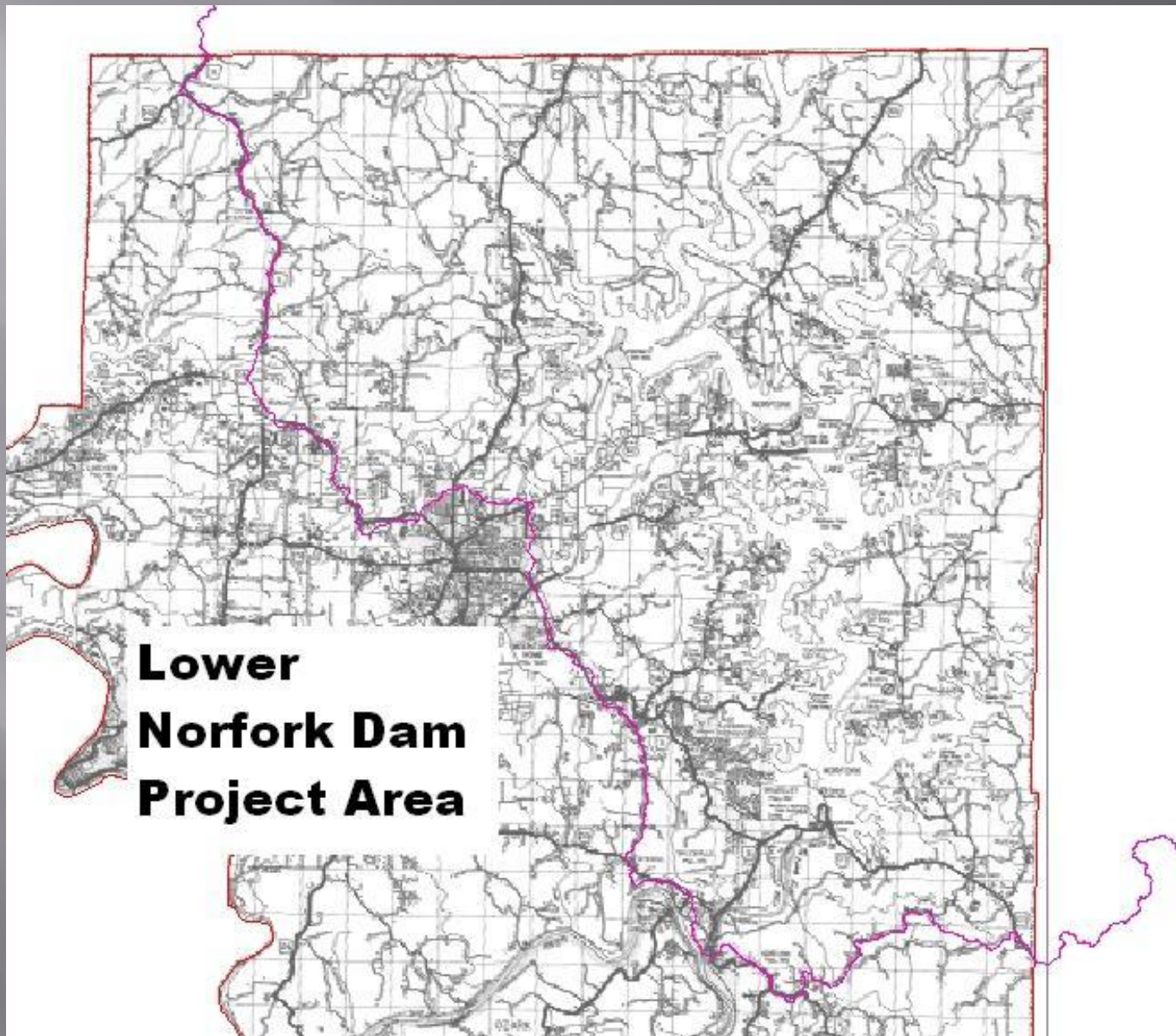
# Lower Norfork Dam Project

- ▣ Baxter County Conservation District
- ▣ Arkansas Natural Resources Commission
- ▣ EPA Section 319 of Clean Water Act

# Those aiding in the project

- ▣ Baxter County Conservation District
- ▣ Arkansas Natural Resources Commission
- ▣ US Environmental Protection Agency
- ▣ Arkansas Association of Conservation Districts
- ▣ Baxter County Cattlemen's Association
- ▣ Baxter County Cooperative Extension Service
- ▣ Baxter County Fair Board
- ▣ Mountain Home FFA
- ▣ Arkansas Game and Fish Commission
- ▣ Baxter County Land Owners





**Lower  
Norfolk Dam  
Project Area**



# Why Is The Lower Norfork Dam Watershed So Important?



# Best Management Practices

- ▣ Fencing
- ▣ Pasture Establishment
- ▣ Brush and Weed Management
- ▣ Watering Facilities
- ▣ Heavy Use Areas
- ▣ Stream Development
- ▣ Animal Waste Systems
- ▣ Stream Bank and Shoreline Protection
- ▣ Buffer Areas



# Fencing





# Drought continued Into Second Year of Project





# Pasture Establishment





# Native Warm Season Pasture Establishment





# Native Grasses Did Well





# First Year Big Bluestem





# Seeded Bermuda Establishment





# Brush Management





# Remove Undesirable Species





# Mountain Home High School Welding Class





# Watering Facilities





# Heavy use areas





# Project Goals

- ▣ 150 Conservation Plans on 21,750 Acres.
- ▣ 6.5 Miles of Stream Bank with voluntary livestock exclusion.
- ▣ Establish a GOOD WORKING RELATIONSHIP with landowners



# Getting The Word Out

- ▣ Newsletters
- ▣ Radio and Television spots
- ▣ Magazine articles
- ▣ Public meetings
- ▣ Field days
- ▣ Booth at County Activities
- ▣ People in the program talking to other people



# Results

- ▣ 113 Conservation Plans Written.
- ▣ \$111,696 Cost Share Funds In The Landowner's Hands.
- ▣ BMP's Implemented on 5081 Acres.
- ▣ 13,231 Feet of Fencing Installed
- ▣ Utilization of Equipment Made Available by the Lower Norfolk Dam Watershed Project.
- ▣ Improve Attitudes Among Landowners Concerning Water Quality and Government Projects



# Lessons Learned

- ▣ Don't let participants get too much going at once.
- ▣ Stay in close contact with the landowner.
- ▣ You can't control the weather.
- ▣ Be ready to listen!

# Water Quality





# Questions?



